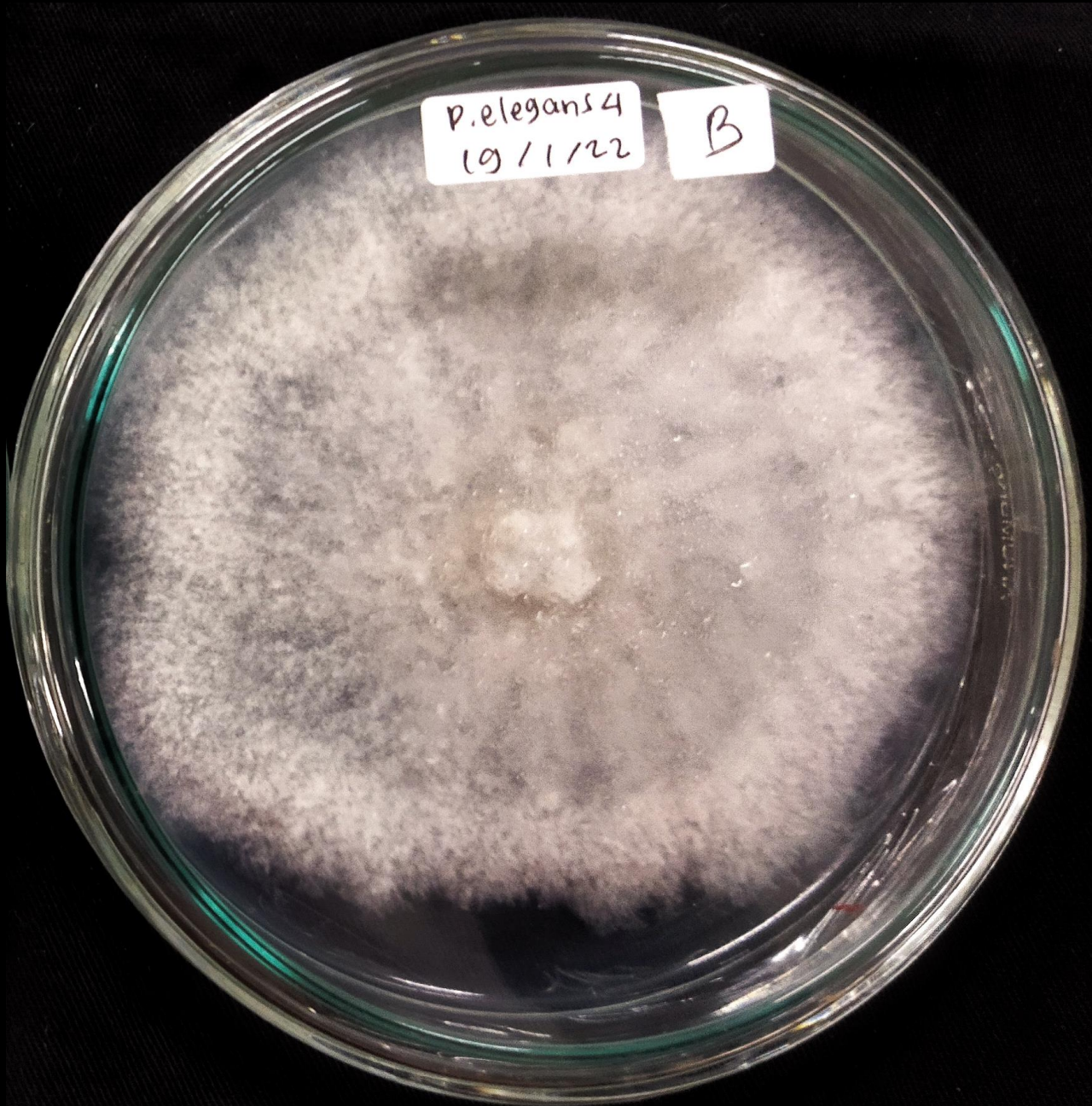


ISSN: 1412-033X  
E-ISSN: 2085-4722

# BIODIVERSITAS

Journal of Biological Diversity

Volume 26 - Number 5 - May 2025



*Polyporus elegans* (Bull.) Trog 1832  
(PHOTO: NOVERITA)

---

Published monthly

PRINTED IN INDONESIA

ISSN: 1412-033X

E-ISSN: 2085-4722



9 771412 033290



9 772085 472294

# BIODIVERSITAS

Journal of Biological Diversity  
Volume 26 – Number 4 – April 2025

ISSN/E-ISSN:

1412-033X (printed edition), 2085-4722 (electronic)

## EDITORIAL BOARD:

**Abdel Fattah N.A. Rabou** (Palestine), **Agnieszka B. Najda** (Poland), **Ajar Nath Yadav** (India), **Ajay Kumar Gautam** (India), **Alan J. Lymbery** (Australia), **Annisa** (Indonesia), **Bambang H. Saharjo** (Indonesia), **Daiane H. Nunes** (Brazil), **Darlina Md. Naim** (Malaysia), **Ghulam Hassan Dar** (India), **Hassan Pourbabaie** (Iran), **Joko R. Witono** (Indonesia), **Kartika Dewi** (Indonesia), **Katsuhiko Kondo** (Japan), **Kusumadewi Sri Yulita** (Indonesia), **Livia Wannatorp** (Sweden), **M. Jayakara Bhandary** (India), **Mahdi Reyahi-Khoram** (Iran), **Mahendra K. Rai** (India), **Mahesh K. Adhikari** (Nepal), **Maria Panitsa** (Greece), **Mochamad A. Soendjoto** (Indonesia), **Mohamed M.M. Najim** (Srilanka), **Mohib Shah** (Pakistan), **Nurhasanah** (Indonesia), **Praptiwi** (Indonesia), **Rasool B. Tareen** (Pakistan), **Seyed Aliakbar Hedayati** (Iran), **Seyed Mehdi Talebi** (Iran), **Shahabuddin** (Indonesia), **Shahir Shamsir** (Malaysia), **Shri Kant Tripathi** (India), **Shubhi Avasthi** (India), **Subhash C. Santra** (India), **Sugeng Budiharta** (Indonesia), **Sugiyarto** (Indonesia), **Taufiq Purna Nugraha** (Indonesia), **Wawan Sujarwo** (Indonesia), **Yosep S. Mau** (Indonesia)

## EDITOR-IN-CHIEF:

**S u t a r n o**

## EDITORIAL MEMBERS:

English Editors: **Suranto** (surantouns@gmail.com); Technical Editor: **Solichatun** (solichatun\_s@yahoo.com), **Artini Pangastuti** (pangastuti\_tutut@yahoo.co.id); Distribution & Marketing: **Rita Rakhmawati** (oktia@yahoo.com); Webmaster: **Ari Pitoyo** (aripitoyo@yahoo.com)

## MANAGING EDITORS:

**Ahmad Dwi Setyawan** (unsjournals@gmail.com)

## PUBLISHER:

The Society for Indonesian Biodiversity

## CO-PUBLISHER:

Department of Biology, Faculty of Mathematics and Natural Sciences, Sebelas Maret University, Surakarta

## ADDRESS:

Jl. Ir. Sutami 36A Surakarta 57126. Tel. +62-271-7994097, Tel. & Fax.: +62-271-663375, email: editors@smujo.id

## ONLINE:

biodiversitas.mipa.uns.ac.id; smujo.id/biodiv



Society for Indonesia  
Biodiversity



Sebelas Maret University  
Surakarta

## GUIDANCE FOR AUTHORS

**Aims and Scope** *Biodiversitas*, *Journal of Biological Diversity* or *Biodiversitas* encourages submission of manuscripts dealing with all aspects of biodiversity, including plants, animals, and microbes at the level of the gene, species, and ecosystem. Ethnobiology papers are also considered.

**Article types** The journal seeks original full-length: (i) **Research papers**, (ii) **Reviews**, and (iii) **Short communications**. Original research manuscripts are limited to 8,000 words (including tables and figures) or proportional to articles in this publication number. Review articles are also limited to 8,000 words, while Short communications should be less than 2,500 words, except for pre-study.

**Submission:** The journal only accepts online submissions through the open journal system (<https://smujo.id/biodiv/about/submissions>) or, for login problems, email the editors at [unsjournals@gmail.com](mailto:unsjournals@gmail.com) (or [editors@smujo.id](mailto:editors@smujo.id)). Submitted manuscripts should be the original works of the author(s). Please ensure that the manuscript is submitted using the template, which can be found at (<https://biodiversitas.mipa.uns.ac.id/D/template.doc>). The manuscript must be accompanied by a cover letter containing the article title, the first name and last name of all the authors, and a paragraph describing the claimed novelty of the findings versus current knowledge. Please also provide a list of five potential reviewers in your cover letter. They should come from outside your institution and better from three different countries. Submission of a manuscript implies the submitted work has not been published (except as part of a thesis or report, or abstract) and is not being considered for publication elsewhere. When a group writes a manuscript, all authors should read and approve the final version of the submitted manuscript and its revision; and agree on the submission of manuscripts for this journal. All authors should have made substantial contributions to the concept and design of the research, acquisition of the data and its analysis, drafting the manuscript, and correcting the revision. All authors must be responsible for the work's quality, accuracy, and ethics.

**Ethics** Author(s) must be obedient to the law and/or ethics in treating the object of research and pay attention to the legality of material sources and intellectual property rights.

**Copyright** If the manuscript is accepted for publication, the author(s) still hold the copyright and retain publishing rights without restrictions. For the new invention, authors must manage its patent before publication.

**Open Access** The journal is committed to free-open access that does not charge readers or their institutions for access. Readers are entitled to read, download, copy, distribute, print, search, or link to the full texts of articles, as long as not for commercial purposes. The license type is CC-BY-NC-SA.

**Acceptance** Only articles written in US English are accepted for publication. Manuscripts will be reviewed by editors and invited reviewers (double-blind review) according to their disciplines. Authors will generally be notified of acceptance, rejection, or need for revision within 1 to 2 months of receipt. Manuscripts will be rejected if the content does not align with the journal scope, does not meet the standard quality, is in an inappropriate format, or contains complicated grammar, dishonesty (i.e., plagiarism, duplicate publications, fabrication of data, citations manipulation, etc.), or ignoring correspondence in three months. The primary criteria for publication are scientific quality and significance. **Uncorrected proofs** will be sent to the corresponding author by system or email as .doc or .docx files for checking and correcting typographical errors. The corrected proofs should be returned in 7 days to avoid publication delays. The accepted papers will be published online in chronological order at any time but printed at the end of each month.

**A charge** Authors are charged USD 400 (IDR 6,000,000). Additional charges may be billed for language improvement, USD 75-150 (IDR 1,000,000-2,000,000). **Reprints** The sample journal reprint is only available by special request. Additional copies may be purchased when ordering by email and sending back the uncorrected proofs.

**Manuscript preparation** Manuscript is typed on A4 (210x297 mm<sup>2</sup>) paper size, in a single column, single space, 10-point (10 pt) Times New Roman font. The margin text is 3 cm from the top, 2 cm from the bottom, and 1.8 cm from the left and right. Smaller lettering sizes can be applied in presenting tables and figures (9 pt). Word processing program or additional software can be used; however, it must be PC compatible, use the template, and be Microsoft Word based (.doc or .rtf; not .docx). **Scientific names** of species (incl. subspecies, variety, etc.) should be written in italics, except in italicized sentences. Scientific names (genus, species, author) and cultivar or strain should be mentioned completely for the first time mentioning it in the body text, especially for taxonomic manuscripts. The genus name can be shortened after the first mention, except in early sentences, or where this may generate confusion; name of the author can be eliminated after the first mention. For example, *Rhizopus oryzae* L. UICC 524 can be written hereinafter as *R. oryzae* UICC 524. Using trivial names should be avoided. **Biochemical and chemical nomenclature** should follow the order of the IUPAC-IUB. For DNA sequences, it is better to use Courier New font. Standard chemical abbreviations can be applied for common and clear used, for example, completely written butilic hydroxyl toluene (BHT) to be BHT hereinafter. **Metric measurements** should use IS denominations, and other systems should use equivalent values with the denomination of IS mentioned first. A dot should not follow abbreviations like g, mg, mL, etc. Minus index (m<sup>-2</sup>, L<sup>-1</sup>, h<sup>-1</sup>) suggested being used, except in things like "per-plant" or "per-plot." **Mathematical equations** can be written down in one column with text; in that case, they can be written separately. **Numbers** one to ten are written in words, except if it relates to measurement, while values above them are written in number, except in early sentences. The fraction should be expressed in decimal. In the text, it should be used "%" rather than "percent." Avoid expressing ideas with complicated sentences and verbiage/phrasing, and use efficient and effective sentences.

**The title** of the article should be written in compact, clear, and informative

sentence, preferably not more than 20 words. Name of author(s) should be completely written, especially for the first and the last name. **Name and institution** address should also be completely written with street name and number (location), postal code, telephone number, facsimile number, and email address. We choose local names in Bahasa Indonesia for universities in Indonesia. The mention of "strata" program, should be avoided. Manuscript written by a group, author for correspondence along with address is required (marked with "¶"). **The title page** (first page) should include title of the article, full name(s), institution(s) and address(es) of the author(s); the corresponding authors detailed postage and e-mail addresses (P), and phone and fax numbers (O).

**Abstract** A concise abstract is required (about 200 words). The abstract should be informative and state briefly the aim of the research, the principal results and major conclusions. An abstract is often presented separately from the article, thus it must be able to stand alone (completely self-explanatory). References should not be cited, but if essential, then cite the author(s) and year(s). Abbreviations should be avoided, but if essential, they must be defined at their first mention. **Keywords** are about five words, covering scientific and local name (if any), research themes, and special methods used; and sorted from A to Z. **Abbreviations** (if any): All important abbreviations must be defined at their first mention there. **Running title** is about five words.

**Introduction** is about 600 words, covering the aims of the research and provide an adequate background, avoiding a detailed literature survey or a summary of the results. **Materials and Methods** should emphasize on the procedures and data analysis. **Results and Discussion** should be written as a series of connecting sentences, however, for a manuscript with long discussion should be divided into subtitles. Thorough discussion represents the causal effect mainly explains why and how the results of the research were taken place, and do not only re-express the mentioned results in the form of sentences. **Concluding** sentence should be given at the end of the discussion. **Acknowledgements** are expressed in a brief; all sources of institutional, private and corporate financial support for the work must be fully acknowledged, and any potential conflicts of interest are noted.

**Figures and Tables** of a maximum of three pages should be clearly presented. The title of a picture is written down below the picture, while the title of a table is written above the table. Colored figures can only be accepted if the information in the manuscript can lose without those images; the chart is preferred to use black and white images. The author could consign any picture or photo for the front cover, although it does not print in the manuscript. All images property of others should be mentioned the source. Author is suggested referring to Wikipedia for international boundaries and Google Earth for satellite imagery. If not specifically mentioned, it is assumed to refer to these sources. **There is no appendix**, all data or data analysis is incorporated into Results and Discussions. For broad data, it can be displayed on the website as a supplement.

**References** Preferably 80% of it comes from scientific journals published in the last 10 years. In the text, give the author names followed by the year of publication and arrange from oldest to newest and from A to Z; in citing an article written by two authors, both of them should be mentioned; however, for three and more authors only the first author is mentioned followed by et al. For example, Saharjo and Nurhayati (2006) or (Boonkerd 2003a, b, c; Sugiyarto 2004; El-Bana and Nijs 2005; Balagadde et al. 2008; Webb et al. 2008). Extent citation should be avoided, as shown with the word "cit." Reference to unpublished data and personal communication should not appear in the list but should be cited in the text only (e.g., Rifai MA 2007, pers. com. (personal communication); Setyawan AD 2007, unpublished data). In the reference list, the references should be listed in alphabetical order. Names of journals should be abbreviated. Always use the standard abbreviation of a journal's name according to the **ISSN List of Title Word Abbreviations** ([www.issn.org/2-22661-LTWA-online.php](http://www.issn.org/2-22661-LTWA-online.php)). Please include DOI links for journal papers. The following examples are for guidance.

### Journal:

Saharjo BH, Nurhayati AD. 2006. Domination and composition structure change at hemic peat natural regeneration following burning: a case study in Pelalawan, Riau Province. *Biodiversitas* 7: 154-158. DOI: 10.13057/biodiv/d070213.

The usage of "et al." in long author lists will also be accepted:

Smith J, Jones M Jr, Houghton L et al. 1999. Future of health insurance. *N Engl J Med* 965: 325-329. DOI: 10.1007/s002149800025.

### Book:

Rai MK, Carpinella C. 2006. *Naturally Occurring Bioactive Compounds*. Elsevier, Amsterdam.

### Chapter in the book:

Webb CO, Cannon CH, Davies SJ. 2008. Ecological organization, biogeography, and the phylogenetic structure of rainforest tree communities. In: Carson W, Schnitzer S (eds.), *Tropical Forest Community Ecology*. Wiley-Blackwell, New York.

### Abstract:

Assaeed AM. 2007. Seed production and dispersal of *Rhazya stricta*. 50th annual symposium of the International Association for Vegetation Science, Swansea, UK, 23-27 July 2007.

### Proceeding:

Alikodra HS. 2000. Biodiversity for development of local autonomous government. In: Setyawan AD, Sutarno (eds.). *Toward Mount Lawu National Park: Proceeding of National Seminary and Workshop on Biodiversity Conservation to Protect and Save Germplasm in Java Island*. Universitas Sebelas Maret, Surakarta, 17-20 July 2000. [Indonesian]

### Thesis, Dissertation:

Sugiyarto. 2004. *Soil Macro-invertebrates Diversity and Inter-Cropping Plants Productivity in Agroforestry System based on Sengon*. [Dissertation]. Universitas Brawijaya, Malang. [Indonesian]

### Information from the internet:

Balagadde FK, Song H, Ozaki J, Collins CH, Barnett M, Arnold FH, Quake SR, You L. 2008. A synthetic *Escherichia coli* predator-prey ecosystem. *Mol Syst Biol* 4: 187. DOI: 10.1038/msb.2008.24. [www.molecularsystembiology.com](http://www.molecularsystembiology.com).

**THIS PAGE INTENTIONALLY LEFT BLANK**

# BIODIVERSITAS

Journal of Biological Diversity  
Volume 26 - Number 5 - May 2025

- 
- Behavioral response of plaintive cuckoos (*Cacomantis merulinus*) to playback of conspecific vocalizations** 2021-2027  
YAUMUD RAIYARDHI, YENI ARYATI MULYANI, MIRZA DIKARI KUSRINI
- In vitro growth assessment of *Trichoderma* spp. from paddy rhizosphere on glyphosate- and fipronil- containing medium** 2028-2038  
AGNES V. SIMAMORA, PETRONELLA S. NENOTEK, MAYAVIRA V. HAHULY, LILY F. ISHAQ, SRI WIDINUGRAHENI, YENNY RAJA KANA, SPERATUS C.U. PASI, ANTONIUS R.B. OLA, EVERT Y. HOSANG, BAYU R. FITRIADI
- Exploring the biocontrol potential of soil bacteria isolated from North Sumatra, Indonesia, against pathogenic fungi** 2039-2050  
SRI WAHYUNI, DWI SURYANTO, KIKI NURTJAHJA
- Implications of population size, structure, and soil parameters for the conservation of *Allochrysa gypsophiloides* in Kazakhstan** 2051-2064  
ASEM TASTANBEKOVA, KANAT KULYMBET, MERUYERT KURMANBAYEVA, MARIA HÖHN, MOLDIR ZHUMAGUL, OZODBEK ABDURAIMOV, GANI I. ISSAYEV, ORYNBASSAR ALSHYNBAYEV, MURAT TOKTAR, ZHASSULAN SMANOV
- High-resolution Unmanned Aerial Vehicles (UAV) imagery for estimating above and below ground biomass in mangroves of Rembang, Central Java, Indonesia** 2065-2078  
SIGIT BAYHU IRYANTHONY, ANINDYA WIRASATRIYA, RUDHI PRIBADI, PUJI WAHYU PURNOMO, ERIZAL MUCTAR, MOHAMMAD BASYUNI, DIAN WIJAYANTO
- Different effects of local and landscape factors on the population density of two fruit fly species in Indonesian apple orchards** 2079-2087  
SHERLITA OCTAVINA RACHMA PUTRI, AKHMAD RIZALI, SILVI IKAWATI
- New distribution record of seagrass *Ruppia brevipedunculata* from intertidal cultivation ponds in South Kalimantan, Indonesia** 2088-2096  
DAFIUDDIN SALIM, ROHANI AMBO-RAPPE, SUPRIADI MASHORENG, NADIARTI NURDIN KADIR, MUTA HARAH ZAKARIA, WAWAN KISWARA
- Plant growth modeling in six landraces of Bambara groundnut seed production (*Vigna subterranea*)** 2097-2105  
ASTRYANI ROSYAD, SATRIYAS ILYAS, ABDUL QADIR, M. RAHMAD SUHARTANTO, DIDY SOPANDIE
- Secondary metabolic analysis of three shallot cultivars on coastal peatlands in Meranti Islands District, Riau Province, Indonesia** 2106-2116  
SELVIA SUTRIANA, SAMANHUDI, EDI PURWANTO, HASAN BASRI JUMIN
- Fungal diversity for enhanced sugar production comparing rotting and non-rotting fungi in pretreatment of empty palm oil bunches** 2117-2129  
INA MONICA FIRSY, RATNA SETYANINGSIH, SRI SUGIWATI, ATANU KUMAR DAS, RONI MARYANA
- Identification and characterization of corn plants for downy mildew resistance in North Sumatra, Indonesia** 2130-2138  
DIANA SOFIA HANAFIAH, SYAMSAFITRI, MARIATI, CHAIRANI HANUM, MUHDI, GALI RAKASIWI, M. HAFAZH ABDURRAHMAN, M. AMIN NUR, DINA SAHTIKA
- Species diversity and abundance of Staphylinidae beetles in monoculture and polyculture vegetable agroecosystems in Cikole Village, West Bandung District, Indonesia** 2139-2147  
LINDUNG TRI PUSPASARI, AMEILIA ZULIYANTI SIREGAR, SUPUTA, ABDUL HAFIZ AB MAJID

<b>Residual stand damage caused by logging operations in secondary forest in Berau District, East Kalimantan, Indonesia</b>	<b>2148-2156</b>
YOSEP RUSLIM, DIAH RAKHMAH SARI, ROCHADI KRISTININGRUM, EMI PURWANTI, WIDIA SRI UTAMI, SELAMET ASHARI, FENTY LEONIKA	
<b>Metagenomic insights into bacterial communities in eco-enzymes and their microbial diversity and abundance</b>	<b>2157-2166</b>
TITTA NOVIANTI, HENNY SARASWATI, H. HAFSAH, SEPRIANTO	
<b>Ethnobotanical study of medicinal plants used in an urban community in Iloilo City, Philippines</b>	<b>2167-2181</b>
CECILIA S. CORDERO, LANDER R. GUILLERGAN, MARIE FRANCES J. NIEVALES, GRECEBIO JONATHAN D. ALEJANDRO	
<b>Analysis of phosphate solubilizing bacteria from mangrove sediments and their relation to the presence of waterbirds</b>	<b>2182-2188</b>
DEVI N. CHOESIN, RESTU UTARI DEWINA	
<b>Comparison of brittle star (Echinoderm: Ophiuroidea) diversity and species composition between two substrates in the intertidal zone</b>	<b>2189-2197</b>
SYIFA MAULIDIA, TRI ATMOWIDI, ISMILIANA WIRAWATI, WINDRA PRIAWANDIPUTRA	
<b>Phytoplankton diversity as a health indicator of coastal ecosystems in Prigi Bay, Trenggalek District, East Java, Indonesia</b>	<b>2198-2209</b>
CATUR RETNANINGDYAH, LUCHMAN HAKIM, ENDANG ARISOESILANINGSIH, SUMANI, RAHMANTA SETIAHADI, MUKHTASOR	
<b>Collembola diversity across three successional stages in a reclaimed tropical mining tailing site, Central Papua, Indonesia</b>	<b>2210-2221</b>
SRIHARTATI HARTO, MUSYafa, SUMARDI, SURYO HARDIWINOTO, RISANDIKA ASTANOVIA DEWI, PRAKTITA PURADYATMIKA, ROBERTH SARWOM	
<b>Chemical fingerprint of robusta coffee beans from various local clones in Tanggamus, Lampung Province, Indonesia</b>	<b>2222-2234</b>
ALVI YANI, MURHADI, SUBEKI, TANTO. P. UTOMO	
<b>Ethnobotany of wild edible plants by the community of Cijambu Village, Sumedang District, West Java, Indonesia</b>	<b>2235-2252</b>
AFDILAH ALFINANDAH, BUDI IRAWAN, JOHAN ISKANDAR	
<b>Seasonal influence on wing phenotypic plasticity in <i>Mansonia indiana</i> (Diptera: Culicidae) along the Thailand-Myanmar border</b>	<b>2253-2260</b>
TANAWAT CHAIPHONGPACHARA, SUCHADA SUMRUAYPHOL, SEDTHAPONG LAOJUN	
<b>Isolation and identification of pathogenic <i>Fusarium oxysporum</i> isolated from soybean leaves</b>	<b>2261-2268</b>
I WAYAN SUANDA, I KETUT WIDNYANA, A. A. ISTRI MIRAH DHARMADEWI	
<b>Analysis of morphology and population dynamics of giant mudskipper <i>Periophthalmodon schlosseri</i> (Gobiiformes: Oxudercidae) at Sungsang estuaries, South Sumatra, Indonesia</b>	<b>2269-2277</b>
MELKI, FADHILAH DZAKIYYAH ANANTA, ISNAINI, FITRI AGUSTRIANI, REZI APRI, HARTONI, ELLIS NURJUALISTI NINGSIH, JENI MEIYERANI	
<b>Traditional fermented anchovy <i>Rusip</i> demonstrates antidiabetic effects through enzyme inhibition and metabolic improvement in diabetic rats</b>	<b>2278-2288</b>
MUHAMMAD ALFID KURNIANTO, ALFINA AYU PUSPITA, SRI WINARTI, HADI MUNARKO, SALMA SHAFRINA AULIA, DINA MUSTIKA RINI	
<b>Morphological traits and nutritional value of six local cultivars of maize (<i>Zea mays</i>) from Gorontalo, Indonesia</b>	<b>2289-2298</b>
NOVRI YOULA KANDOWANGKO, MARGARETHA SOLANG, FEBRIYANTI, AISYAH AHMAD	

<b>Ecological insights post-restoration from two decades of mangrove forest succession in Pangpang Bay, East Java, Indonesia</b>	<b>2299-2308</b>
HARI SULISTIYOWATI, RENDY SETIAWAN, ARIF MOHAMMAD SIDDIQ, RETNO WIMBANINGRUM, MUHAMMAD AFRIYANTO, ELA APRILIYANTI HASANAH, BUDI PUTRA MULYADI, ABDILLAH BARAAS	
<b>Community structure of epilithic microalgae in the Upper Setail River, Banyuwangi District, East Java, Indonesia</b>	<b>2309-2319</b>
DIANA ARFIATI, UMI ZAKIYAH, ALFI NUR RUSYDI, MUHAMMAD ZIDAN AL ATHOR, KHARISMA ORCHIDA, ZAKIYYAH NUR INAYAH, WINDA HIMATUL ULYA, AHMAD ALFA SAHAL, RIFQAH RACHMAWATI, TITIS DWI ANDHANI, RIZKY KUSMA PRATIWI	
<b>Wildlife diversity of Malagufuk Forest for sustainable ecotourism and community-based forest management in West Papua, Indonesia</b>	<b>2320-2331</b>
AMATUS TUROT, CHANDRA DEWANA BOER, PAULUS MATIUS, JONNI MARWA, RUJEHAN, RUSTAM, RACHMAT BUDIWIJAYA SUBA, ALI SUHARDIMAN, ROCHADI KRISTININGRUM, YOSEP RUSLIM	
<b>Micromorphological analysis of spores on various species of Pteridophytes: Implications for species identifications</b>	<b>2332-2338</b>
MILDAWATI, SHAVIRA PERDANI SAFITRIA HANAFI, ELSA PUTRI, M. ABDUL AZIZ, SHERLI IVANI, NURHASNA1 SOLFIYENI	
<b>Antibacterial activity and bioactive compounds of symbiotic bacterial isolates from <i>Polycarpa aurata</i> in Barrang Lompo Island, Makassar, Indonesia</b>	<b>2339-2354</b>
HERWIN, GEMINI ALAM, SARTINI, NURHASNI HASAN, ABDUL RAHIM, HERLINA RANTE, RISFAH YULIANTI, LATIFAH RAHMAN	
<b>Colchicine mutagenesis effects on the characteristics and correlation of the M2 variant population of rice varieties</b>	<b>2355-2367</b>
SUNTAREE SURSON, SUPHASIT SITTHAPHANIT <sup>2</sup> JAKKAPAT PRACHACHIT, THARADOL JITJAK, KHUMPANAT WONGKERSON, TANAKORN RACHAPILA	
<b>Evaluation of the potential of starter culture from Indonesian kefir grains on the characteristics of fermented milk during storage</b>	<b>2368-2374</b>
PUTRI DIAN WULANSARI, NOVIA RAHAYU, ANDRI KUSMAYADI, RIO JATI KUSUMA	
<b>Hunting for livelihoods by farmers in the lowland forests of Papua's Bird's Head Peninsula, Indonesia</b>	<b>2375-2382</b>
AGUSTINA YOHANA SETYARINI AROBAYA, JOHN R. M. APITULEY, AUGUST E. PATTISELANNO, GUN MARDIATMOKO, FREDDY PATTISELANNO	
<b>Identification and genetic diversity of Japanese apricot (<i>Prunus mume</i>) accessions in northern Vietnam</b>	<b>2383-2392</b>
THI TUYET CHAM LE, THI MAI ANH VU, THI THUY HANG VU, THI NGOC PHAM, DANG DUNG HOANG, THU THUY DOAN	
<b>Ethnobotanical study of sikkam (<i>Bischofia javanica</i>) in Simalungun District, North Sumatra, Indonesia</b>	<b>2393-2401</b>
RIDA HATI RAMBEY, BINTANG PANDAPOTAN PANJAITAN, SUKENDRA PURBA, ANITA ZAITUNAH, RAHMAWATI, SUTOMO, MUHAMMAD HADI SAPUTRA, PENIWIDIYANTI, FAEZAH PARDI, MOHD NAZIP SURATMAN, MOHD HASMADI ISMAIL	
<b>Population structure of yellowfin seabream (<i>Acanthopagrus latus</i>) in Central Vietnam through morphological and genetic analyses</b>	<b>2402-2409</b>
NGUYEN TY, NGUYEN MY KIM NGAN, BUI VAN LOI, NGUYEN DUC THANH, NGUYEN XUAN HUY, TRAN VAN GIANG	
<b>Vegetation diversity and composition, and forage production of natural pasture in East Luwu Regency, South Sulawesi, Indonesia</b>	<b>2410-2415</b>
SEMA, JASMAL AHMARI SYAMSU, AMBO AKO, RINDUWATI	

<b>Ethnobotany of Piperaceae in Nakhon Nayok Province, Central Thailand</b>	<b>2416-2428</b>
PIYAPORN SAENSOUK, THAWATPHONG BOONMA, TAMMANOON JITPROMMA, TRAN VAN CHEN, SURAPON SAENSOUK,	
<b>Risks and benefits of introducing double-muscled Belgian Blue cattle to Indonesia's tropical climate</b>	<b>2429-2447</b>
GRETANIA RESIDIWATI, HABIB S.A. TUSKA, OLOAN PARLINDUNGAN, SRI W. SISWANTI, BART LEEMANS, KAREN GOOSSENS, SITI E. ROCHMI, BUDIONO, AGUNG BUDIYANTO, BAMBANG PURWANTARA, BONICK KARTINI LONAMEO, OSVALDO B. PASCOTTINI, GEERT OPSOMER, ANN VAN SOOM	
<b>Economic valuation of a protected mangrove forest in Southern Cebu, Philippines</b>	<b>2448-2459</b>
ROSE JANE C. ROSALES, LORENCE R. LIBRANZA, JADA FRANCINE Z. ROBLE, FLORY MAY B. JUCDONG, MARINELLE C. JUMAWAN, SARAH EMPEÑO, CHERRY M. FLORES, JASON DUMDUM, SYLVESTER T. CORTES, ZERRY AYN Z. RETUBADO, ANNE S. LORCA, JOSEPH JOEL N. ALMAGRO	
<b>Microplastics in the digestive organs of little egret (<i>Egretta garzetta</i>), Tanjung Rejo Village, Deli Serdang District, North Sumatra, Indonesia</b>	<b>2460-2466</b>
ERNI JUMILAWATY, MAYANG ADINDA HARAHAP, MOHAMMAD BASYUNI, BEJO SLAMET	
<b>Key variables for sustainable mangrove ecosystem management based on <i>Scylla</i> spp. in Banten Bay, Indonesia</b>	<b>2467-2485</b>
ADITYA RAHMAN KINTU NIHAN, CECEP KUSMANA, MAJARIANA KRISANTI, TATANG TIRYANA, YAYA IHYA ULUMUDDIN	
<b>Karyotype analysis of <i>Eleutherine bulbosa</i> (Iridaceae) from Kalimantan, Indonesia</b>	<b>2486-2494</b>
NOOR AINI HABIBAH, WORO ANINDITO SRI TUNJUNG, METI INDROWATI, ALIN LIANA	
<b>Chemical profile, botanical origin, and antioxidant activity of Stingless bees propolis from Konawe Island, Southeast Sulawesi, Indonesia</b>	<b>2495-2507</b>
NIKEN PUJIRAHAYU, ZAKIAH USLINAWATY, HALIMAHTUSSADDIYAH RITONGA, NURHAYATI HADJAR, DINI PRASETYA, DIRVIN, AHMAT GARI	
<b>Dietary diversity of the vulnerable leaf-eating monkey <i>Presbytis fredericae</i> in the degraded forest of Mount Merbabu, Indonesia</b>	<b>2508-2518</b>
PUGUH KARYANTO, DHINDA TAZKIA, IKE NURJUITA NAYASILANA, ARI SUSILOWATI, SUNARTO, JAROT WAHYUDI, SRI SUTJI UTAMI ATMOKO, SHUKOR MD NOR	
<b>Comparing diatom diversity over three decades in the Brantas River Malang, Indonesia</b>	<b>2519-2530</b>
M IQBAL NAJIB FAHMI, SUSRIYATI MAHANAL, SITI ZUBAIDAH, IBROHIM	
<b>Hemiparasitic features and antioxidant activity of <i>Dendrophthoe pentandra</i> and <i>Scurrula atropurpurea</i> on <i>Diospyros rhodocalyx</i></b>	<b>2531-2539</b>
NONTHIWAT TAESUK, SIRITHIDA BOONPEN, KULLASATREE MANEE, PASAKORN BUNCHALEE, TEERAPORN KATISART, VACHIRAPORN PIKULTHONG, SUTHIRA MANEECHAI	
<b>Genetic variability analysis of indigenous Indonesian chickens and Hy-Line brown using mitochondrial DNA D-Loop HV1 region</b>	<b>2540-2547</b>
ORIZA PRABA ALBANI, ISMOYOWATI, HERMAWAN SETYO WIDODO, SRI RAHAYU, DATTA DEWI PURWANTINI	
<b>Exploring the bacteriome of <i>Etlingera balikpapanensis</i> for potential biofertilizer development and conservation strategies</b>	<b>2548-2555</b>
ALMANDO GERALDI, FATIMAH, RICO RAMADHAN, NI'MATUZAHROH, HERY SUWITO, NABILLA HAPSARI WIJAYA, YANA ZAINADA VIRDAUS, RICA HANIM FADHILAH, ARRIZAL RAHMAN, LUKMAN RIYADI	

---